

**TITLE:** GRAIN SCOOP  
**BLANK SIZE:** 600mm x 300mm  
**CENTER** 128mm

**GENERAL INSTRUCTIONS**

1. Read the job sheet carefully, make sure you know what is required before starting the job.
2. Follow the operation steps as listed unless directed otherwise by instructor.
3. This is a cold metal bending and rolling operation, do not move the work more than is necessary.

**SEQUENCE OF OPERATION**

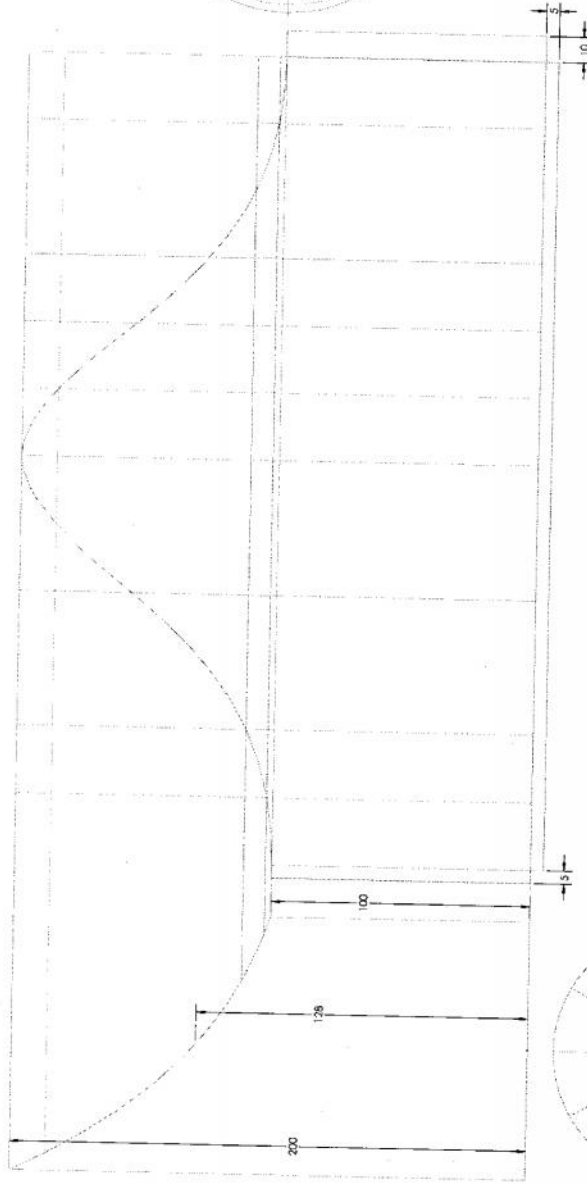
**TOOLS**

- |  |   |
|--|---|
| 1. Cut off the correct size blank(work piece).                 | Snips, shearing machine                             |
| 2. Develop the cone on the workpiece                           | Divider, steel rule, scribe                         |
| 3. Mark the other parts ie. bottom ,handle on<br>The workpiece | steel rule, scribe, divider                         |
| 4. Lay out the parts to be cut.                                | Steel rule, scribe, divider try<br>square           |
| 5. Cut off close to the line the different parts.              | Snips, chisel, hammer                               |
| 6. Shape the grooves as on the drawing.                        | Snips, file   |
| 7. Roll the cylinders.   | Rolling machine, soft<br>hammer, anvil              |
| 8. Fit the three parts together.                               | Ballpeen hammer, anvil                              |
| 9. Make the seam joints and grooved joints where necessary     | soft hammer, anvil                                  |
| 10. Rivet the joints   | Ballpeen hammer, center<br>punch, drill bit, rivets |
| 11. Solder the joints.   | Soldering set                                       |
| 12. Remove the bars.   | File  |
| 13. Hand in the job for inspection.                            | Instructor.   |

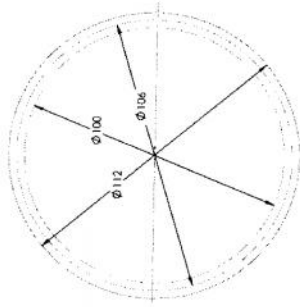
ALL DIMENSIONS IN MM

# CEREAL SCOOP

PART 1: BODY DEVELOPMENT



PART 2: BOTTOM



PART 3: HANDLE

