

SHAPING MACHINE OPERATIONS

OPERATION SHEET

OPERATION NO.	DETAILS	OTHER TOOLS
1	Remove burrs or sharp edges by filing from the workshop	Flat File
2	Check the measurement of the work piece by measuring with a ruler	Ruler
3	Hold the work piece in the vice of the machine. The machine should rest on the parallel strips	Parallel Strips
4	Mount the shaping tool in the tool holder. Machine the top part of the work piece	Tool bit
5	Remove the work piece from the vice and file the burrs from it. Clamp it again to the vice. The machined face should rest against the fixed jaw of the vice. Machine the top part of the work piece	File
6	Hold the work piece vertical in the vice at 90 degrees with the help to a try-square.	Try-Square
7	Remove the work piece and file off the burrs. Machine all the four sides of the work piece as in steps 4 and 5 to the measurement indicated on the sketch	Vernier Caliper, File
8	Repeat step 6.	Try-Square
9	Machine both ends to the measurements	Vernier Caliper

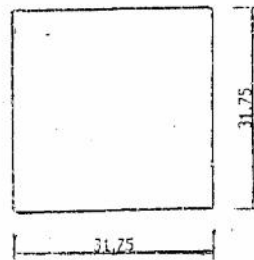
8-4-5 FIRST YEAR WORKSHOP TECHNOLOGY SHAPING EXERCISE

OBJECTIVE

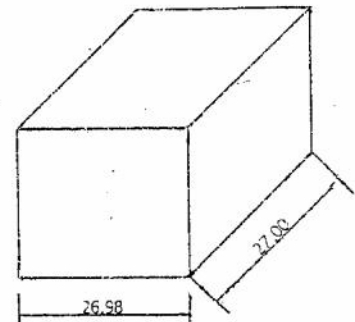
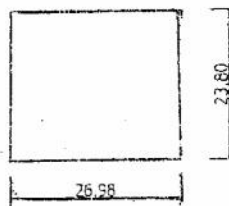
To demonstrate use of a shaping specimen tool as a means of removing bulks material from jobs that do not require high precisions use of personal judgement in controlling the feed will have been learned by the end of the exercise.

SKETCH

WORK PIECE



SHAPING



DIMMENSIONS : mm
MATERIAL : MILDSTEEL
WORKPIECE : AS Above
FINISHED EXERCISE :
GENERAL TOLERANCE : 0.1mm